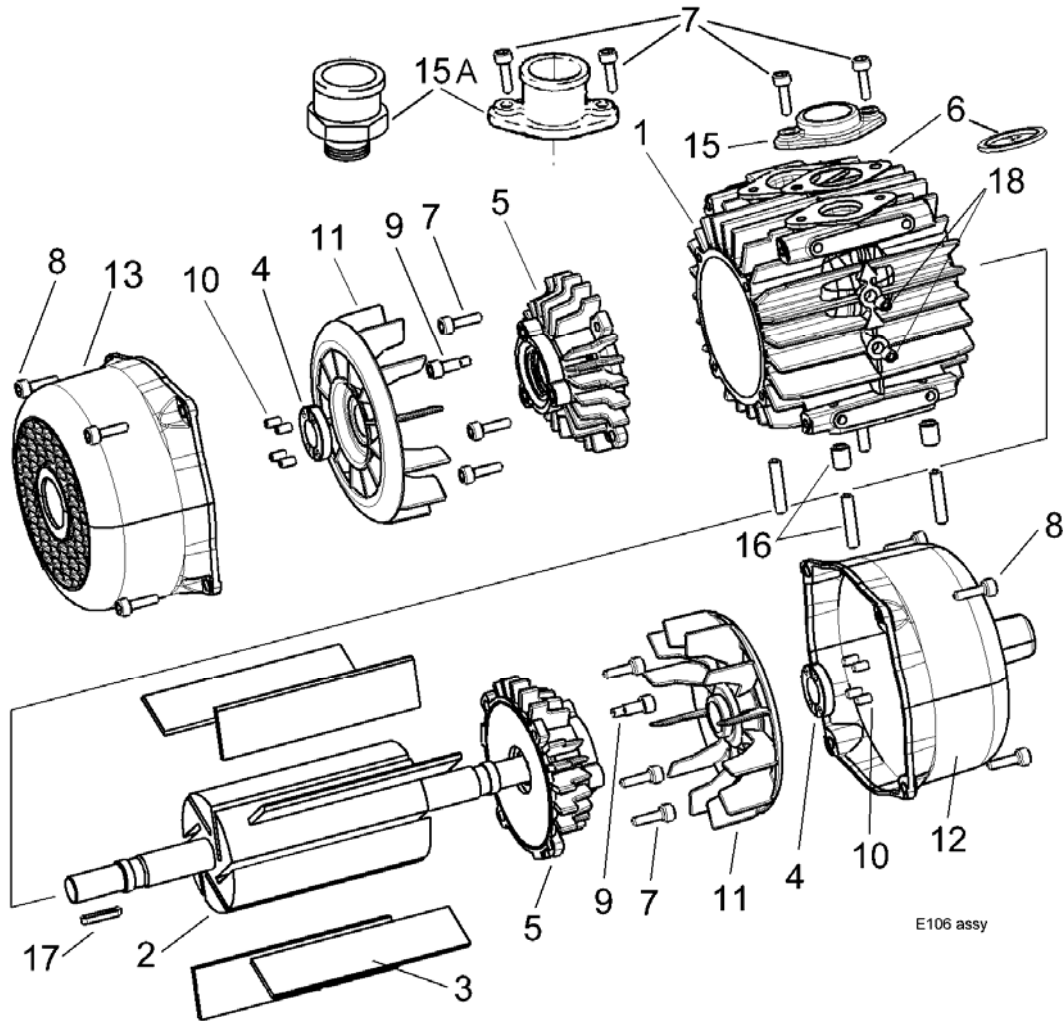


BLACKMER ROTARY-VANE COMPRESSOR PARTS LIST

MODELS: E56, E106, E156

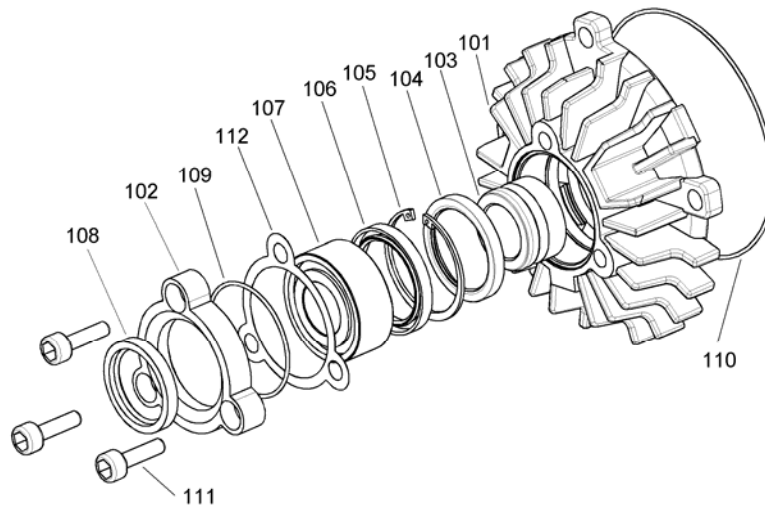
(See Instructions 208-A00 for Installation, Operation and Maintenance)

Section	208
Effective	Dec 2005
Replaces	Oct. 2005



REF. NO.	DESCRIPTION	QTY.	PART NO.	Wear Part	REF. NO.	DESCRIPTION	QTY.	PART NO.	Wear Part	
1	Body – Plated	E56	1	Y220468		10	Set Screw (M8)	8	Y220608	
		E106	1	Y220472		11	Fan	2	Y220613	
		E156	1	Y220467		12	Cowl (Non-Drive End)	1	Y220617	
2	Rotor	E56	1	Y220479		13	Cowl (Drive End)	1	Y220618	
		E106	1	Y220480		15A	Inlet Filter Flange E106, E156	1	Y220652	
		E156	1	Y220482			Inlet Hose Connector E56	1	Y220651	
3	Blade	E56	6	Y220487	●	15	Outlet Flange BSP E106, E156	1	Y220695	
		E106	6	Y220489	●		Flange - 1 1/2" NPT E106, E156	1	Y220720	
		E156	6	Y220488	●		Adaptor - 1 1/2" NPT E156	1	Y223259	
4	Split Sleeve	2	Y220509		16	Stud Kit E56	1	Y313085.00		
5	Sideplate Assembly	2	Y313083.00			E106, E156	1	Y313084.00		
6	Gasket – Flange	2	Y207557	●	17	Shaft Key	1	Y220534		
	1" BSP Dowty Seal	2	Y219623	●	18	Set Screw (1/4" BSP)	3	Y219521		
7	Capscrew (M10 x 25)	E56	6	Y220568		Not shown	E56 Foot Mounting Bracket. Also requires four 220568 capscrews	2	Y220657	
		E106	10			Not shown	Repair Kit (with Blades, Bearings, Seals, Gaskets & Circlips)	E56	Y313096.01	●
		E156	10		E106			Y313095.01		
8	Capscrew (M10 x 20)	8	Y200414			E156	Y313094.01			
9	Shoulder Screw (M8)	2	Y220593							

1 : included in the repair kit
2 : included in the stud kit



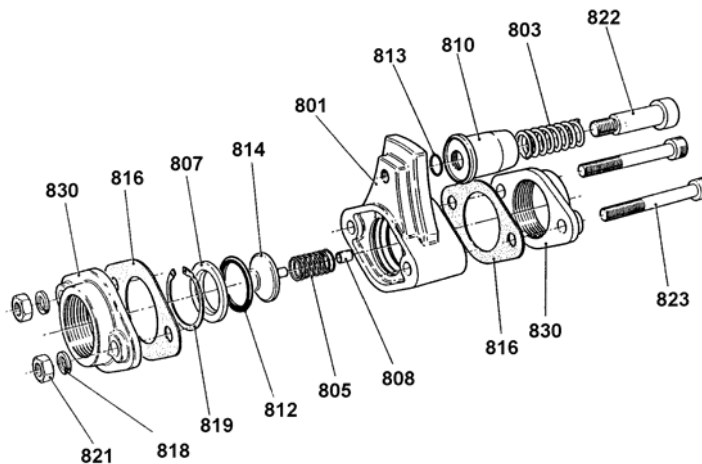
SIDEPLATE ASSEMBLY

REF. NO.	DESCRIPTION	QTY.	PART NO.	Wear Part	REF. NO.	DESCRIPTION	QTY.	PART NO.	Wear Part
101	Sideplate	1	Y220474		¹ 108	Grease Seal – Bearing Cap	1	Y220524	●
102	Bearing Cap	1	Y220478		¹ 109	O-Ring – Bearing Cap	1	Y220530	●
103	Distance Sleeve	1	Y220508		¹ 110	O-Ring – Sideplate	1	Y220526	●
¹ 104	Lip Seal	1	Y220531	●	111	Capscrew (M10 x 25)	3	Y220568	
¹ 105	Circlip	1	Y220566			Shim (0.023mm - Yellow)	A/R	Y220563	
¹ 106	Grease Seal – Sideplate	1	Y219688	●	¹ 112	Shim (0.036mm - Transparent)	A/R	Y220564	
¹ 107	Bearing	1	Y220515	●		Shim (0.050mm - Blue)	A/R	Y220565	

A/R = As Required

1 : included in the repair kit

CHECK RELIEF VALVE

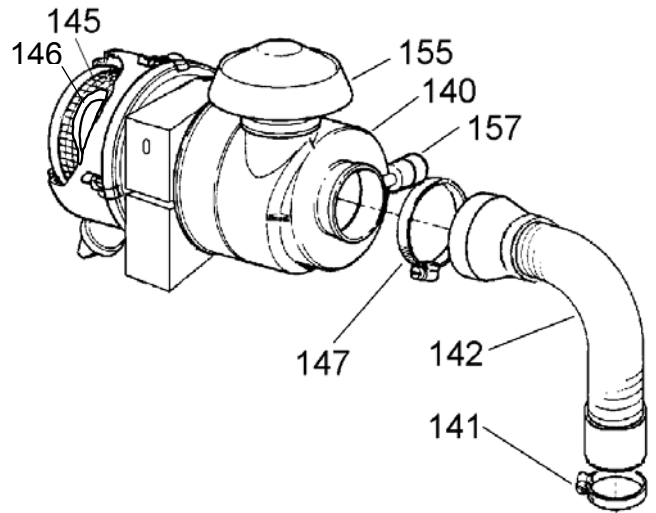


REF. NO.	DESCRIPTION	QTY.	PART NO.	Wear Part	REF. NO.	DESCRIPTION	QTY.	PART NO.	Wear Part
801	Body – Relief Valve	1	Y220466		814	Check Valve	1	Y220497	
803	Spring (29 psig, 2.0 bar, White, Std.) Spring (36 psig, 2.5 bar, Black)	1	Y220705		816	Gasket – Flange	2	Y207557	●
			Y220704		² 818	Spring Washer	2	Y217223	
805	Spring	1	Y220707		819	Circlip	1	Y200020	
807	Retaining Ring	1	Y220513		² 821	Nut (M10)	2	Y213727	
808	Bushing	1	Y220502		822	Shoulder Screw	1	Y220569	
810	Relief Valve	1	Y220492		823	Capscrew (M10 x 90)	2	Y220572	
812	O-Ring	1	Y220527	●	830	Flange – 1 1/2" BSP	2	Y220695	
813	O-Ring	1	Y220522	●		Flange – 1 1/2" NPT	2	Y220720	

2 : included in the stud kit

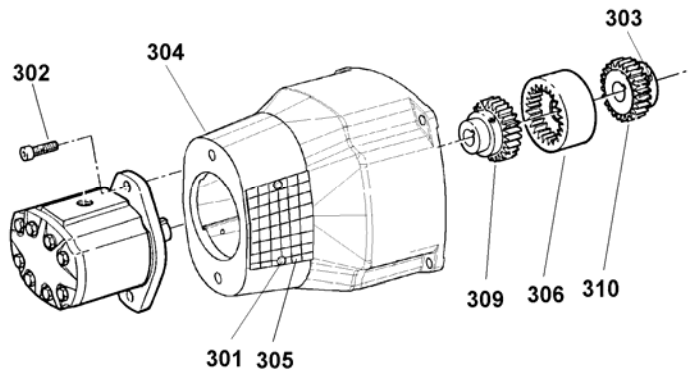
INLET FILTER

REF. NO.	DESCRIPTION	QTY.	PART NO.	Wear Part
140	Filter Unit E56, E106 E156	1	Y310634 Y312659	
141	Hose Clip	1	Y200915	
142	Flexible Hose E56, E106 E156	1	Y220638 Y220637	
145	Filter Element E56, E106 E156	1	Y220669 Y220666	● ●
146	Safety Element E56, E106 E156	1	Y215638 Y220006	● ●
147	Hose Clip E56, E106 E156	1	Y200915 Y217050	
155	Rain Cap E56, E106 E156	1	Y215636 Y220008	
157	Filter Restriction Indicator	1	Y215658	



HYDRAULIC DRIVE ADAPTOR

REF. NO.	DESCRIPTION	QTY.	PART NO.	Wear Part
301	Self Tapping Screw	4	Y220571	
302	Capscrew (M12 x40)	2	Y200370	
303	Set Screw (M6 x 10)	2	Y220575	
304	Trunk (SAE B)	1	Y220627	
305	Access Plate	2	Y220632	
306	Coupling Sleeve	1	Y220647	
309	Coupling Hub (7/8" Std.) (24 mm)	1	Y220809 220640 *	
310	Coupling Hub (25 mm)	1	Y220644	

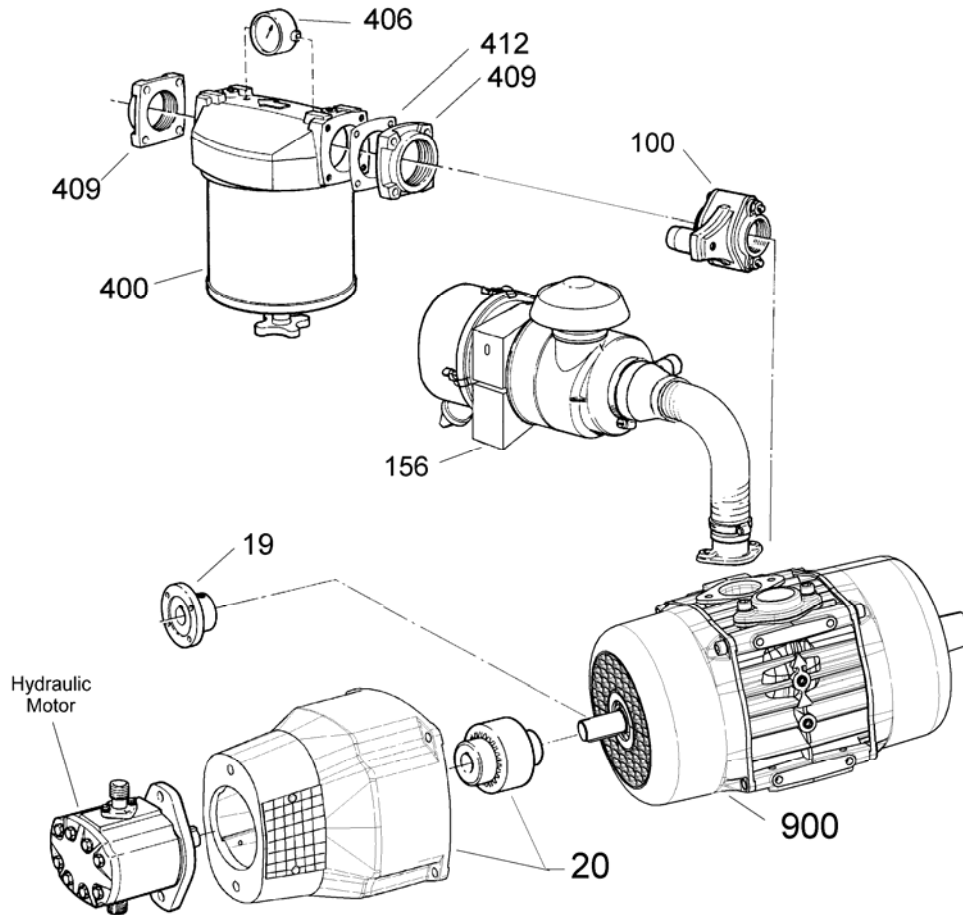


* Not available for sale.

INTERCHANGEABILITY CHART – Model E106 and Discontinued Model E100

DESCRIPTION	STATUS	DESCRIPTION	STATUS
Body - Compressor	Fully Interchangeable	Sideplate Assembly	Fully Interchangeable
Rotor	Fully Interchangeable	Flanges	Fully Interchangeable
Blades	Fully Interchangeable	Gaskets	Fully Interchangeable
Fan	Both Fans & Cowls must be changed as sets.	Shims	Fully Interchangeable
Cowl	Both Fans & Cowls must be changed as sets.	Hydraulic Trunk	New Type Fan must also be installed.

ACCESSORIES



REF. NO.	DESCRIPTION	QTY.	PART NO.	Wear Part	REF. NO.	DESCRIPTION	QTY.	PART NO.	Wear Part		
900	E56 Compressor (with Ref. 19)	1	Y514576.01		156	Inlet Filter Kit E56	1	Y313097.00			
	E106 Compressor (with Ref. 19)	1	Y514687.02			E106	1	Y313097.00			
	E156 Compressor (with Ref. 19)	1	Y514423.01			E156	1	Y313099.00			
	E56 Compressor (with Ref. 20 hub 24 mm)	1	Y514686.01		20	Hydraulic Motor Drive Adaptor Kit (Hub 24 mm)	1	Y313302.00			
	E106 Compressor (with Ref. 20 hub 24 mm)	1	Y514336.02			Hydraulic Motor Drive Adaptor (hub 7/8")	1	Y313170.00			
	E156 Compressor (with Ref. 20 hub 24 mm)	1	Y514585.01		19	Drive Flange - 1100	1	Y313126.00			
	E56 Compressor (with Ref. 20 hub 7/8")	1	Y514976.01			400	Pressure Line Filter (No. 1 - 5 micron)	1	Y514337.00		
	E106 Compressor (with Ref. 20 hub 7/8")	1	Y514977.02				406	Differential Pressure Gauge Kit	1	NC *	
	E156 Compressor (with Ref. 20 hub 7/8")	1	Y514978.01								
	100	Check Relief Valve (2 bar, 1.5" NPT)	1	Y514352.00		409	Flange (1 1/2" NPT)	1	Y220720		
Check Relief Valve (2 bar, 1.5" BSP)		1	Y514323.00		Flange (1 1/2" BSP)		1	Y220695			
Check Relief Valve (2,5 bar, 1.5" BSP)		1	Y514324.00		412	Flange Gasket	2	Y220562	●		

* Not available for sale.



1809 Century Avenue, Grand Rapids, Michigan 49503-1530, U.S.A.
 Telephone: (616) 241-1611 / Fax: (616) 241-3752
 E-Mail: blackmer@blackmer.com / Internet: www.blackmer.com

Parts List 208-A01
 Page 4 of 4